



THE WESTBURY
MAYFAIR - LONDON

THE
LUXURY
COLLECTION



THE ESSENCE OF MAYFAIR



THE SPIRIT OF THE WESTBURY MAYFAIR

Situated in the heart of *Mayfair* – London’s most exclusive fashion and boutique district, The Westbury Mayfair is the only hotel located on Bond Street, a stone’s throw away from cultural treasures, shopping, theatres and London’s commercial centre. Guests can enjoy a heightened sense of luxury with 225 elegant bedrooms newly redesigned by Alex Kravetz Designs, of which 64 are indulgent Suites.



Alyn Williams at The Westbury – Aspen Room



Alyn Williams at The Westbury – Wine Room



The Polo Bar



SUPERIOR SUITES

Brought to us, and made for you by Alex Kravetz Designs we are proud to introduce the all new Superior Suite category furnished with a luxury king size bedroom and separate living area. Tastefully decorated and surrounded with warm wood panelling, the Superior Suite is ideal for entertaining or perhaps hosting a small meeting in the living area. With two built-in television systems, a spacious wardrobe, in room safe, snack and mini bar, individual heat/air conditioning controls, Wi-Fi connectivity and a spacious Italian marbled bathroom with a separate walk-in shower and bathtub, the Superior Suite is the perfect choice to help you relax after a full day shopping.

Average size: 484 ft² / 45 m²



DELUXE SUITES

The delicate Deluxe Suite offers guests an elevated feel of luxury, providing every comfort from its ensuite marble bathroom with separate walk-in shower and bathtub, to a refined and spacious living room, perfect for entertaining whilst in Mayfair. Additional features include built-in television systems, in room safe, snack and full bar, individual heat/air conditioning controls and Wi-Fi. The Deluxe Suite is perfect for the traveller seeking a memorable and comfortable abode away from home.

Average size: 517 ft² / 48 m²





CORNER SUITE

The spacious and elegant Corner suite is tastefully decorated with soft coloured furnishings creating a warm and welcoming living ambience. There is a spacious living room with a comfortable sofa and armchairs as well as a dining table perfect for entertaining in Mayfair. The suite is equipped with a fully marbled ensuite bathroom with a walk-in shower and bathtub as well as a separate guest toilet, enhancing the sense of privacy. It is equipped with a plasma television and refrigerated bar as well as Wi-Fi connectivity. The suite offers stunning views overlooking Bond Street and provides an abundance of natural light.

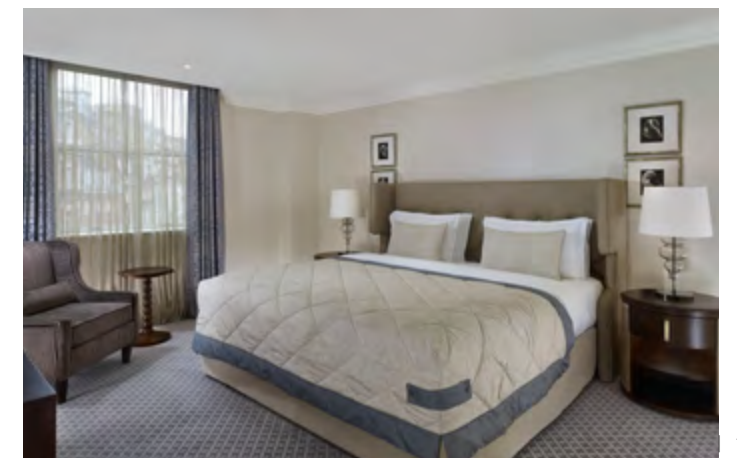
Average size: 700 ft² / 65 m²



LUXURY SUITE

Reinvented by Alex Kravetz Designs, all our new Luxury Suites offer an elevated and grand feel to our guests who are seeking a sleek, yet comfortable abode away from home. Donned in tailored furnishings, every comfort is provided; from your private butler who is on hand to assist with any request to a fully marbled ensuite bathroom with a separate walk-in shower and bathtub and a refined and spacious living room, perfect for entertaining in Mayfair. Additional features include built-in television systems, large wardrobe, in room safe, snack and full bar, individual heat/air conditioning controls, Wi-Fi connectivity and the benefit of a separate guest toilet, enhancing the sense of privacy.

Average size: 807 ft² / 75 m²



THE BERKELEY TERRACE SUITE

The Westbury's sumptuous Berkeley Terrace Suites is located on the discreet 7th floor and offers some of the finest accommodation in London. The Suite named after the local Berkeley square in Mayfair boasts spacious living and dining areas furnished with a sofa, armchairs and a dining table perfect for entertaining friends and family. The suite is equipped with a fully marbled ensuite bathroom with a walk-in shower and bathtub as well as a separate guest toilet, enhancing the sense of privacy. The highlight of the Berkeley Suite is the spacious terrace overlooking the Mayfair skyline and offering a perfect décor to any Summer entertaining or sunset watching.

Average size: 861 ft² / 80 m²





THE HANOVER TERRACE SUITE

The Westbury's sumptuous Hanover Terrace Suites is located on the discreet 7th floor and offers some of the finest accommodation in London. The Suite named after the local Hanover square in Mayfair boast spacious living and dining areas furnished with a sofa, armchairs and a dining table perfect for business or leisure entertaining. The suite is equipped with a fully marbled ensuite bathroom with a walk-in shower and bathtub as well as a separate guest toilet, enhancing the sense of privacy. The spacious terrace overlooking Mayfair is the perfect set for any sunrise yoga start or any romantic dinner.

Average size: 861 ft² / 80 m²



ST GEORGE'S PENTHOUSE



ST. GEORGE’S PENTHOUSE

The most arresting feature of the St George’s Penthouse Suite is the magnificent panoramic view over Mayfair, breathtaking from the private terrace overlooking the rooftops of Conduit and Bond Street. Located on the top floor of the hotel, the suite features a master bedroom with accompanying walk-in dressing room, a luxurious marble bathroom with a separated bath, walk-in shower and guest toilet. The exceptional private dining and lounge area flooded by daylight are the central point of the Suite and ideal for any business breakfast or private parties organised and prepared by your private butler. The Penthouse Suite is the jewel in its crown and can act as a two bedroom suite which can accommodate up to four people, if connected with the adjacent Luxury King Bedroom. Additional features include built-in television systems, in room safe, snack and mini bar, individual heat/air conditioning controls and Wi-Fi connectivity.

Average size: 1238 ft² / 115m²





Stay in one of our sophisticated and unique suites into the home of The Westbury Mayfair for an exceptional, intimate and memorable London experience. Our Les Clefs d'Or Concierge team will be delighted to organise any bespoke activities during your stay. We remain at your disposal for any further information.

THE WESTBURY MAYFAIR

A LUXURY COLLECTION HOTEL, LONDON

37 CONDUIT ST, W1S 2YF
UNITED KINGDOM

T +44 (0)20 8382 6194 — F +44 (0)20 7000 1360
E reservations@westburymayfair.com
WESTBURYMAYFAIR.COM

