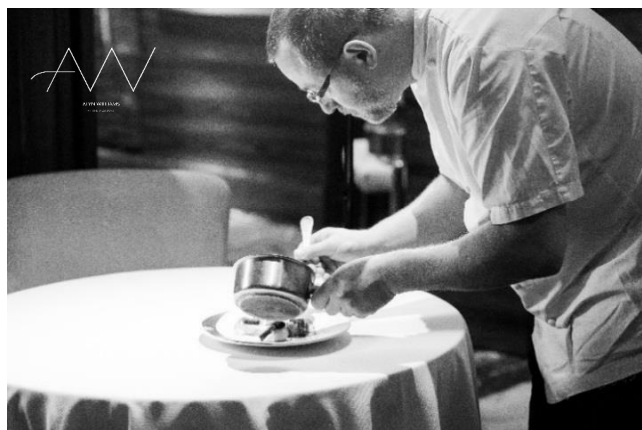


EPICURIAN HAPPENINGS AT THE WESTBURY MAYFAIR



'ALYN WILLIAMS AT THE WESTBURY'

3 Course Set Lunch Menu

Tuesday-Friday lunch

£30* per person, £60* per person with 3 matching wines,
£50* per person with 2 matching wines

7 Course Tasting Menu

Tuesday - Saturday lunch and dinner

£90* per person, £160* per person with matching wines,
£230 per person with prestige selection or £140* per person
with matching beers

For more information or booking

contact alyn.williams@westburymayfair.com Tel: [+44 \(0\)207 183 6426](tel:+442071836426)

POLO BAR

'Polo Weekender'

Bottle of Moët & Chandon NV Champagne paired with
Panko Crusted King Prawns served with a sweet chili dip
Available Saturday & Sunday only, £85* for the set

For more information or booking

contact polo.bar@westburymayfair.com Tel: [+44 \(0\)208 382 5006](tel:+442083825006)



TSUKIJI SUSHI

Tsukiji Sushi Set Lunch Menu

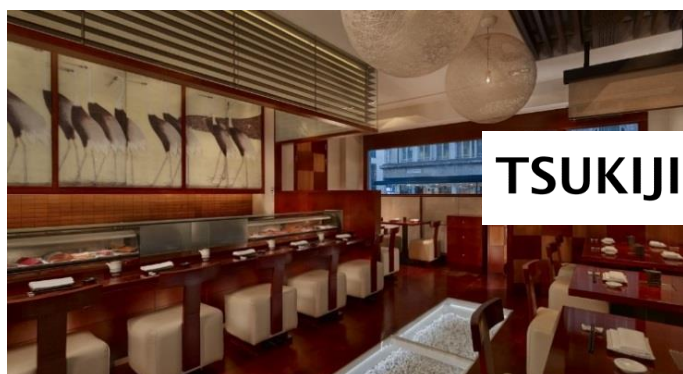
Composed by head Chef Show Choong to provide all
nutrition needs, the menu starts with a Japanese miso
soup followed by a medley of sushi and sashimi pieces
with green salad and pickles and finishing with a
seasonal dessert

Available Monday-Saturday 12noon-4pm, from £23.5*
per person

3 Course Dinner Set Menu

Choose your starter, main and dessert from the set
dinner menu.

Available Monday-Saturday 5pm-9:30pm, £45* per
person



*Exclusively of 12.5% discretionary service charge

For more information or booking

contact damir.lipa@westburymayfair.com Tel: [+44 \(0\)208 382 5066](tel:+442083825066)